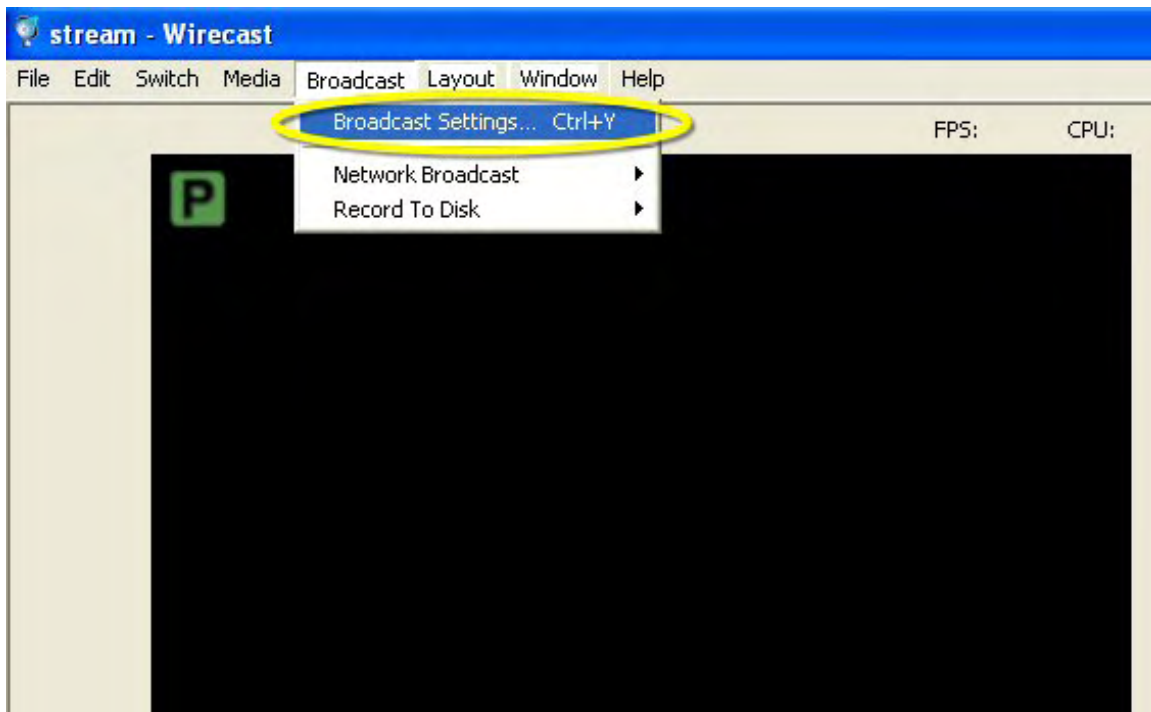




## Setting up Wirecast for Streaming

### Stream Settings

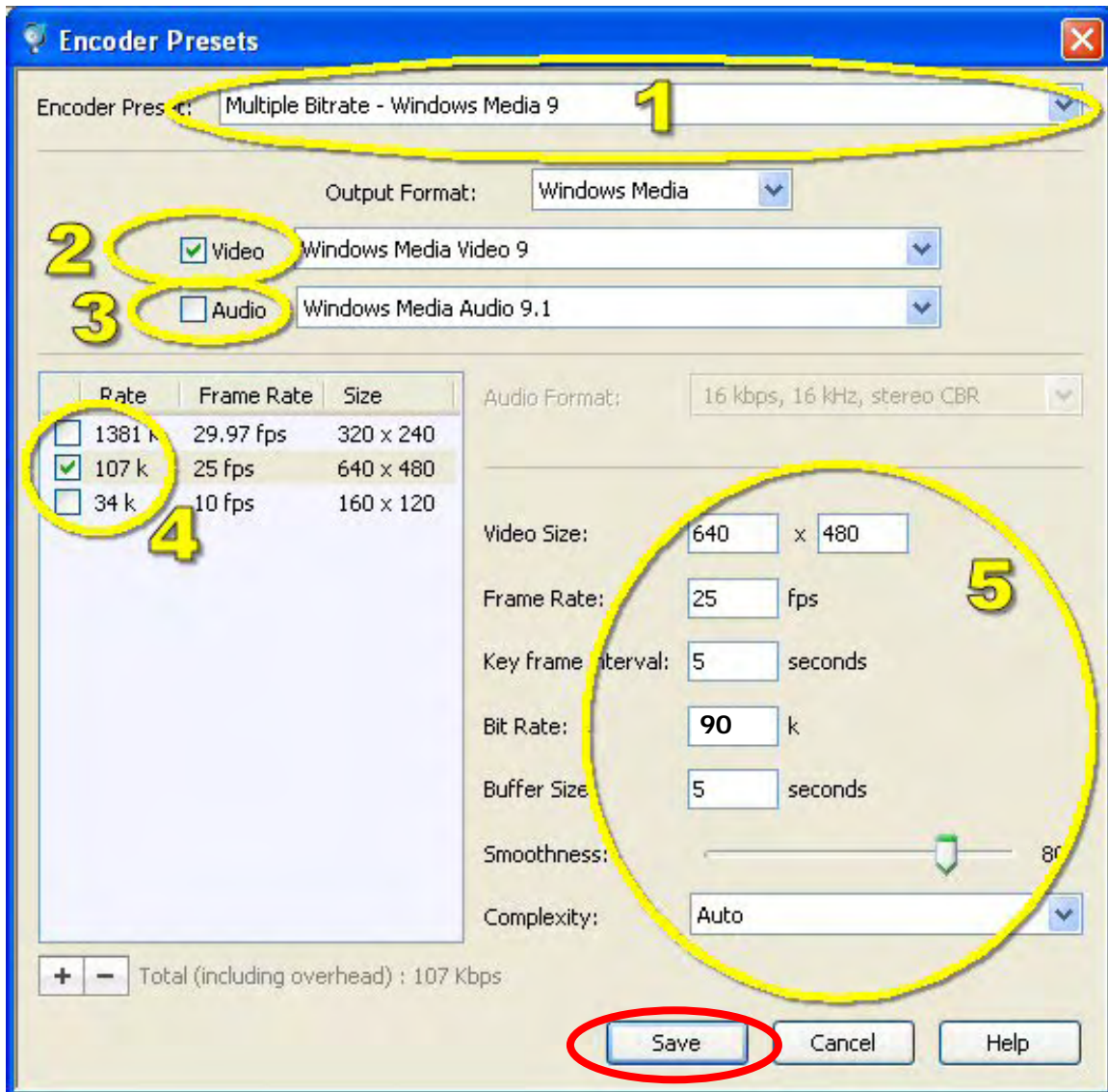
- Open Wirecast
- Click on the "Broadcast" tab
- Click "Broadcast Settings..."



- Click "Edit..." (1)



- Set Encoder Preset to “Multiple Bitrate – Windows Media 9” (1)
- (2) Make sure Video is checked and set like the picture below
- (3) Make sure Audio is UNchecked



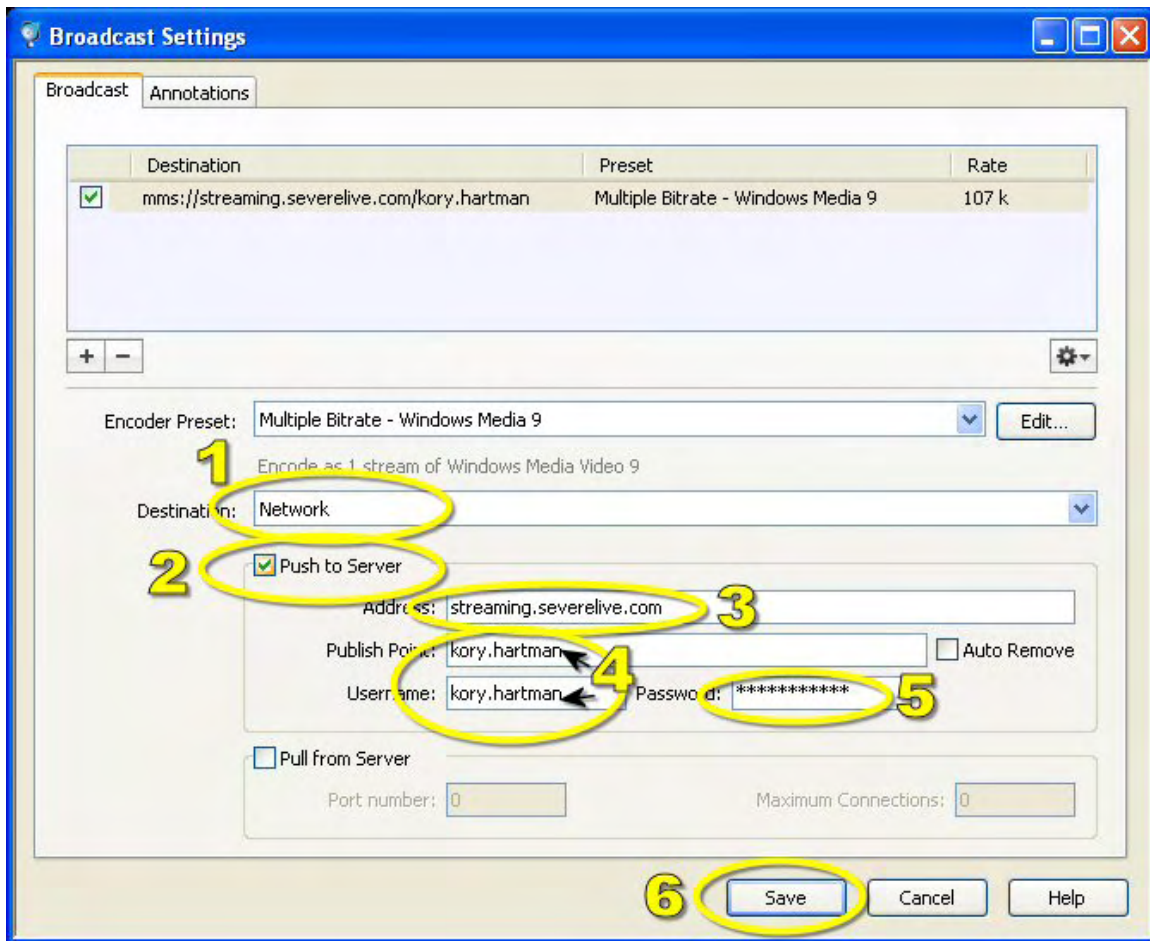
- (4) Uncheck the top and bottom boxes under “Rate”
- On the right side (5), set up your parameters as shown:
  - Video Size: **640 x 480**
  - Frame Rate: **25** fps
  - Key frame interval: **5** seconds
  - Bit Rate: **90** k
  - Buffer Size: **5** seconds
  - Smoothness: **80**
  - Complexity: **Auto**
- Hit “Save”

**NOTE:**

In low signal areas or on slow cellular connections, you may have to drop to **320 x 240**, **15 fps** and **50 k** in order to broadcast a stable stream.

If you notice a lot of disconnects, try lowering the **k** and **fps** parameters!

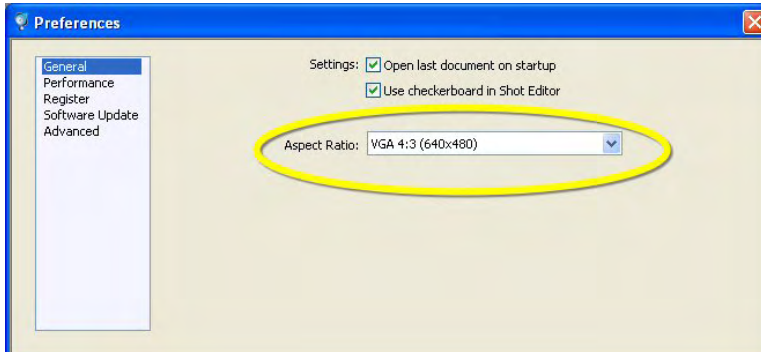
- Set Destination as “Network” (1)
- Check “Push to Server” (2)



- Address is streaming.severelive.com (3)
- Publishing Point and Username are both the same and are your SevereStreaming username (**firstname.lastname**) (4)
- Enter your Password (5)
- Hit “Save” (6)

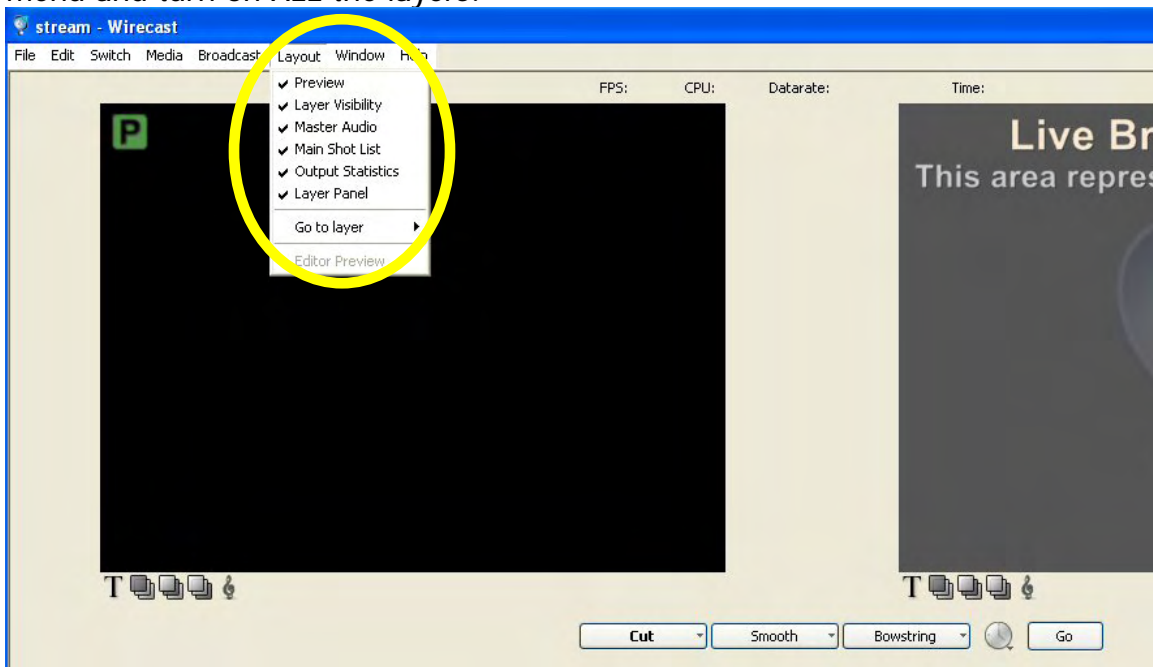
## **Preferences - General**

Click the “File” menu and click “Preferences”. Set the Aspect Ratio to “VGA”:

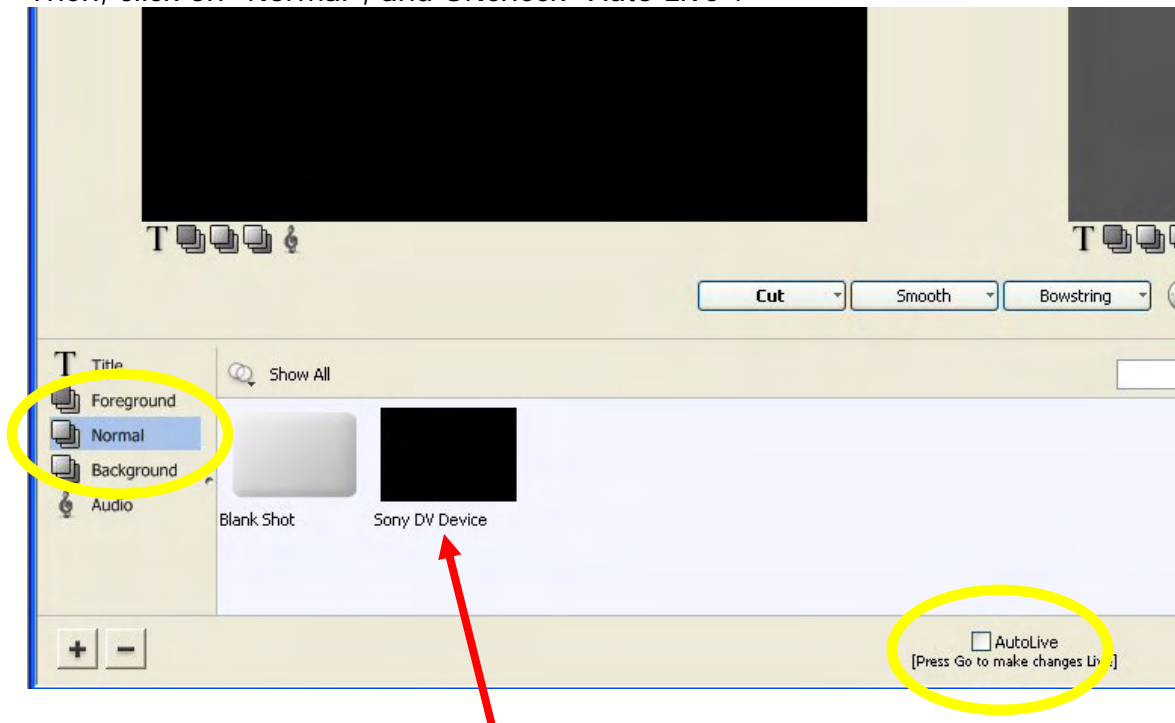


## Video Settings

In the main Wirecast screen, the first thing you want to do is click the “Layout” menu and turn on ALL the layers:



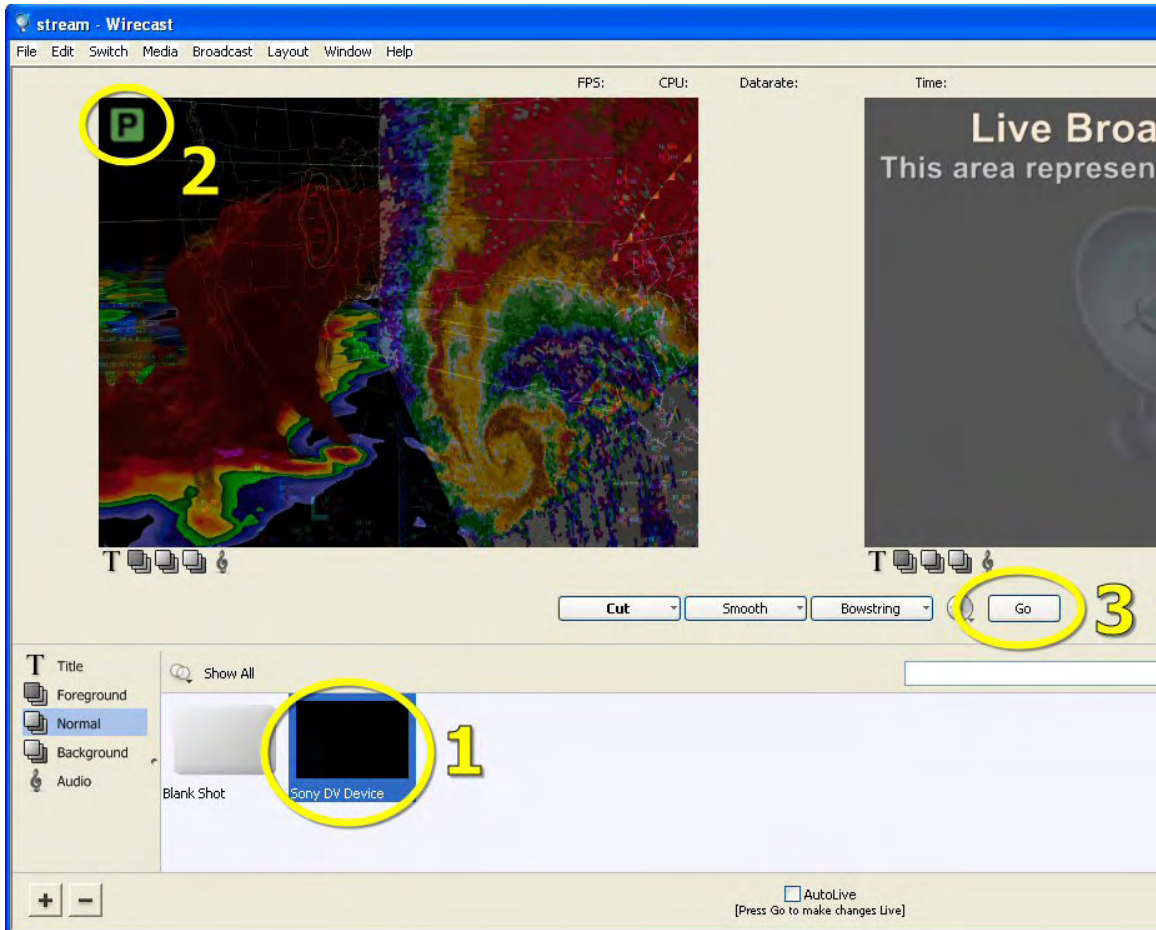
Then, click on “Normal”, and UNcheck “Auto Live”:



If you have your camera connected via FireWire or USB, you should see it listed in the shot list.

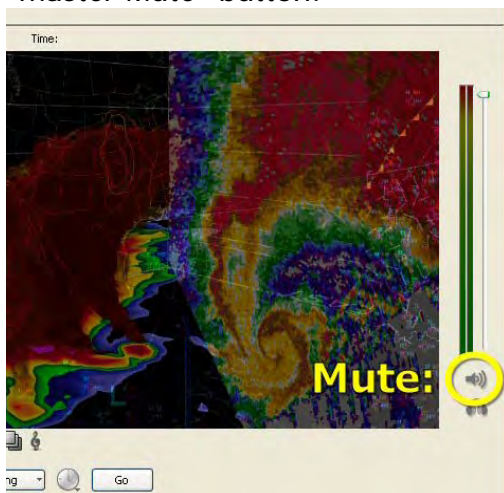
**HINT:** Don't pay any attention to what the little thumbnail shows in the shot list.

To preview your camera output, click on the Device (1), and the feed will show up in the Preview pane, marked with the green "P" (2):

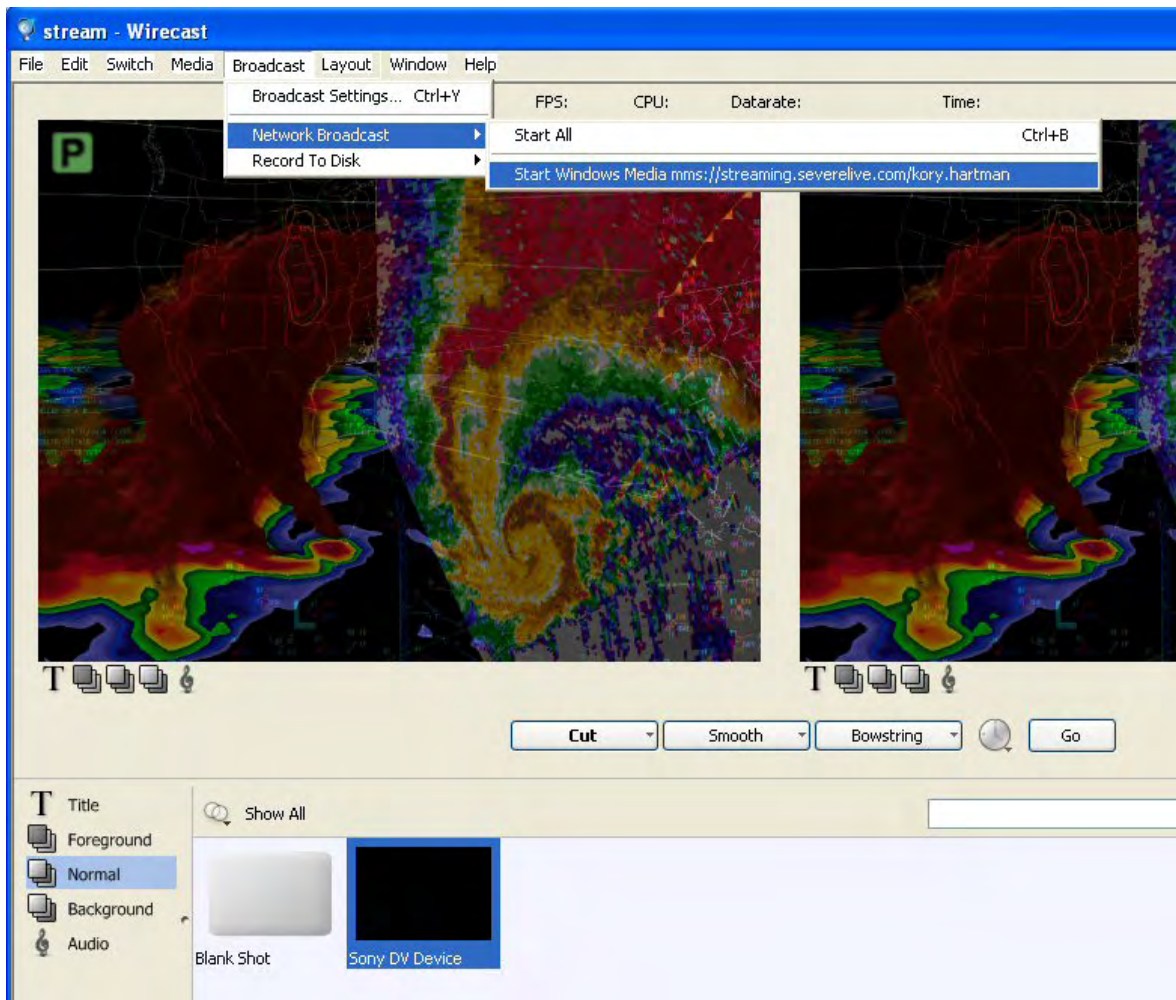


Press "Go" (3) to make the camera source LIVE.

If you get any sort of feedback or echo from the audio system, simply click the "master Mute" button:



Finally, to begin streaming, click the “Broadcast” button, go down to “Network Broadcast” and arrow over to “Start Windows Media...”



Or, you can simply hold down **CTRL** on your keyboard and press the “**B**” key.

This is very useful when trying to operate Wirecast in a mobile setting.

Remember,

**CTRL + B**

(“B” for “Broadcast”)

For tech support, please email [support@severestudios.com](mailto:support@severestudios.com)